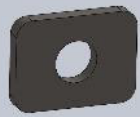


2020 Chevrolet 40" & 56" Single/Dual Wheel

CLL8 Level Lok Kit Installation Guide

This guide will assist you in the installation of the level lok kit for the 2020 Chevrolet 40" & 56" Single/Dual wheel series of vehicles.

Parts in the kit are as follows:

Item No.	Part Number	Description	Quantity	
1	FP-CLL4 TUBE	Front support, CLL-4, CLL-6	1	
2	FP-CLL8 CNTR	Center Level lok, CLL-8	2	
3	FP-CLL8-REAR	Rear Level lok, CLL-8	2	
4	FP-CLL2-7	Level lok, front reinforcing plate	4	
5	BO-5/8X1-3/4 FLHCS	Flange head bolt, 5/8x1-3/4	2	
6	BO-5/8 HNN	Lock nut, 5/8	2	
7	BO-14-2.0X50 HCS	Bolt, 14-2.0 x 50mm	4	
8	BO-14 LW	Washer, lock	4	
9	BO-3/4x1-1/2	Bolt, 3/4x1-1/2	2	
10	BO-3/4 FLN	Nut, flange 3/4	2	

1. Place front support tube (**ITEM 1**) on top of the left and right front bed mount risers. Line up inner holes in the support tube to the holes in the bed mount risers. Fasten support tube to risers using (2) 5/8" x 1-3/4" (**ITEM 5**), (4) level lok reinforcing plates (2 per side) (**ITEM 4**) and (2) 5/8" nyloc nuts (**ITEM 6**). Tighten all bolts. **Figure 1 & 2**

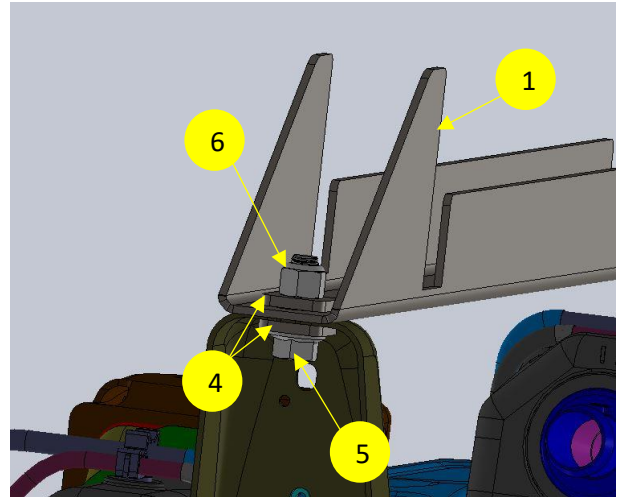


Figure 1

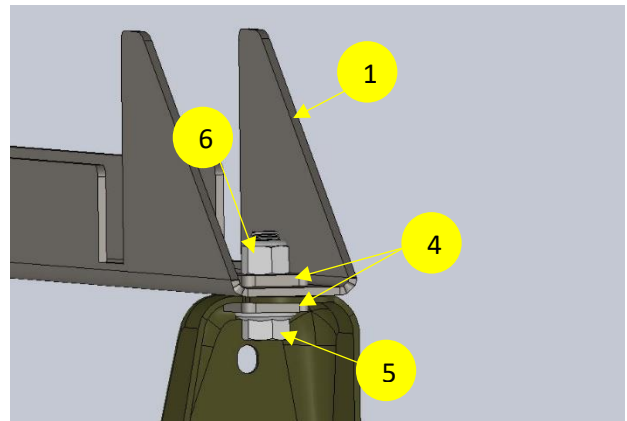


Figure 2

2. Install driver and passenger center level loks (**ITEM 2**) in the two front holes on top of the vehicle frame rails using (4) M14 x 50mm (2 per side) (**ITEM 7**) and (4) M14 lock washers (2 per side) (**ITEM 8**). A corner of the aluminum exhaust heat shield on the passenger side will need to be removed to allow the passenger center level lok to be installed (see figure 4). Tighten all bolts. **Figure 3, 4 & 5**

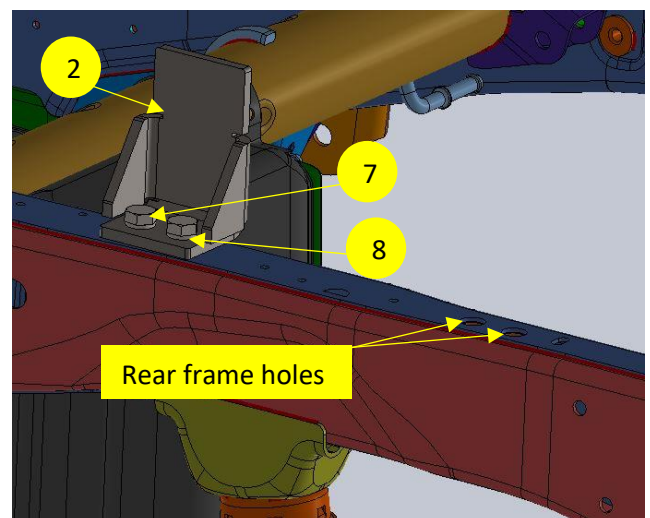


Figure 3



Figure 4

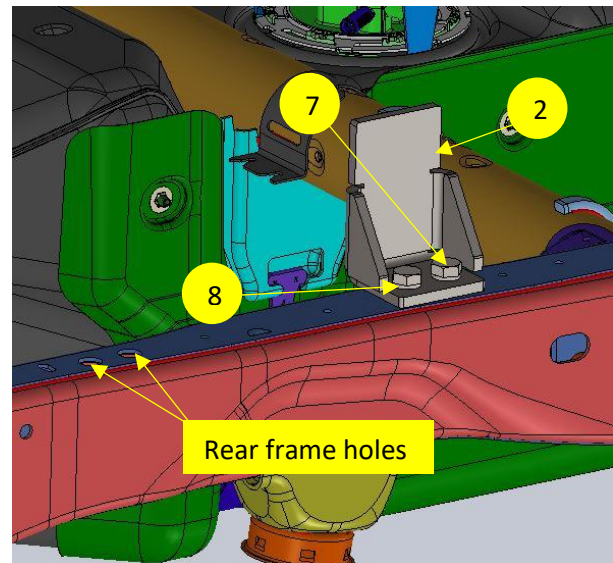


Figure 5

3. Install driver and passenger rear level loks using (2) $\frac{3}{4}$ " x 1-1/2" bolts (**ITEM 9**) and (2) $\frac{3}{4}$ " flange nuts (**ITEM 10**). Tighten the bolts. Figure 6 & 7

